

# CAL

## SUCTION FILTERS



### MATERIALS

Housing: Zinc plated steel

### WORKING TEMPERATURE

From -25° to +110° C

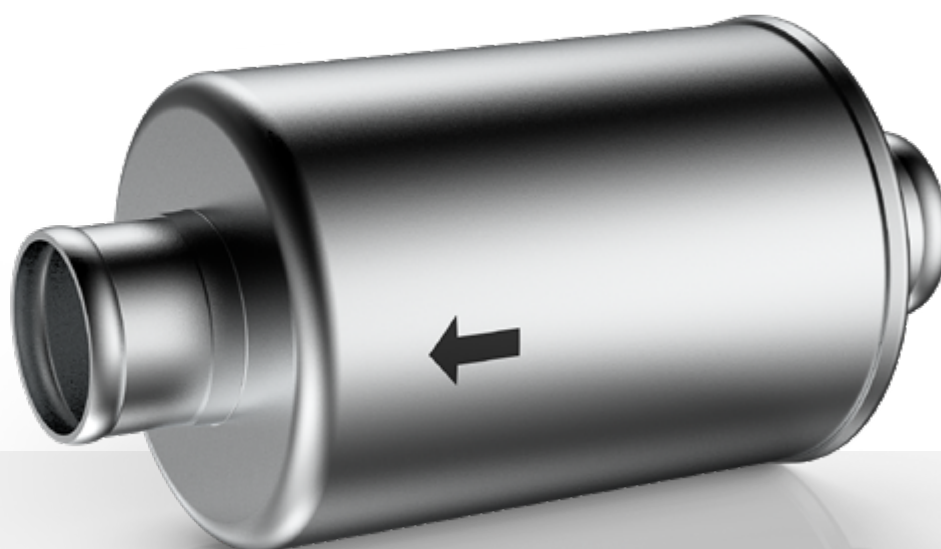
### FLOW RATE

Up to 100 l/min

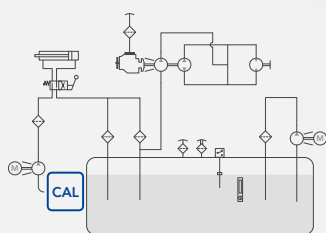
### COMPATIBILITY (ISO 2943)

Full with fluids: HH-HL-HM-HV-HTG  
(according to ISO 6743/4)

For fluids different than the above mentioned, please contact our Customer Service.



### HYDRAULIC DIAGRAM

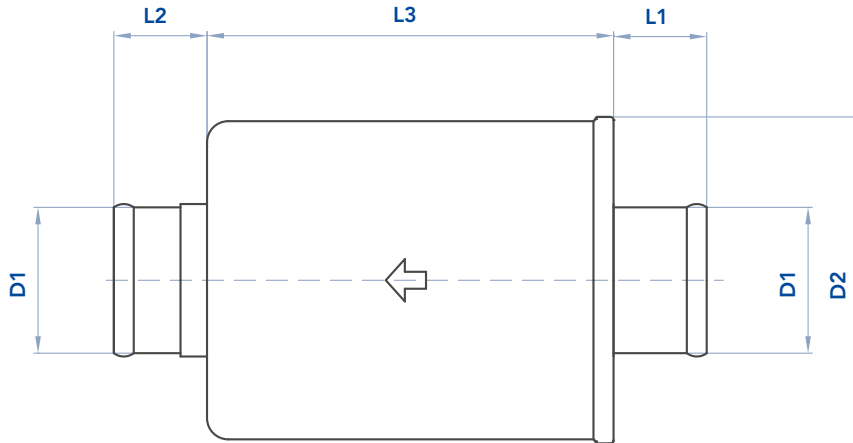


Is this datasheet the latest release? Please check on our website.



# CAL SUCTION FILTERS

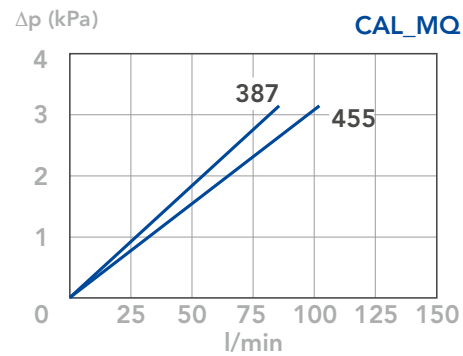
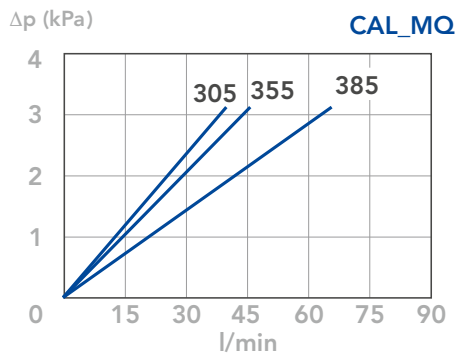
## INSTALLATION DRAWING



## FILTER HOUSING

UFI Code	Old Sofima Code	Nominal Flow Rate l/min	Filter Media	D1	D2	L1	L2	L3	kg
CAL305MQ	CAL305MC	40	Wire mesh 160 µm	30	72	23	23	100	0,35
CAL355MQ	CAL355MC	45	Wire mesh 160 µm	35	80	22	22	96	0,35
CAL385MQ	CAL385MC	65	Wire mesh 160 µm	38	72	23	23	100	0,35
CAL387MQ	CAL387MC	85	Wire mesh 160 µm	38	72	23	23	160	0,40
CAL455MQ	CAL455MC	100	Wire mesh 160 µm	45	100	32	42	139	0,65

## PRESSURE DROP CURVES ( $\Delta P$ )



### N.B.

The references fluid has a kinematic viscosity 30 cSt and specific gravity 0,86 kg/dm<sup>3</sup>.

For different oil viscosity please contact our Customer Service for further information.