

ESA-ESB

SUCTION FILTERS



MATERIALS

Connector: Polyamide (Aluminium for ESA & ESB 51 - 52)
End cap: Polyamide (Zinc plated steel for ESA & ESB 51 - 52)
Bypass valve: (ESA) Polyamide
Magnetic core: (ESB) Synthesized magnetic material

PRESSURE

Collapse, differential: 100 kPa (1 bar)

BYPASS VALVE

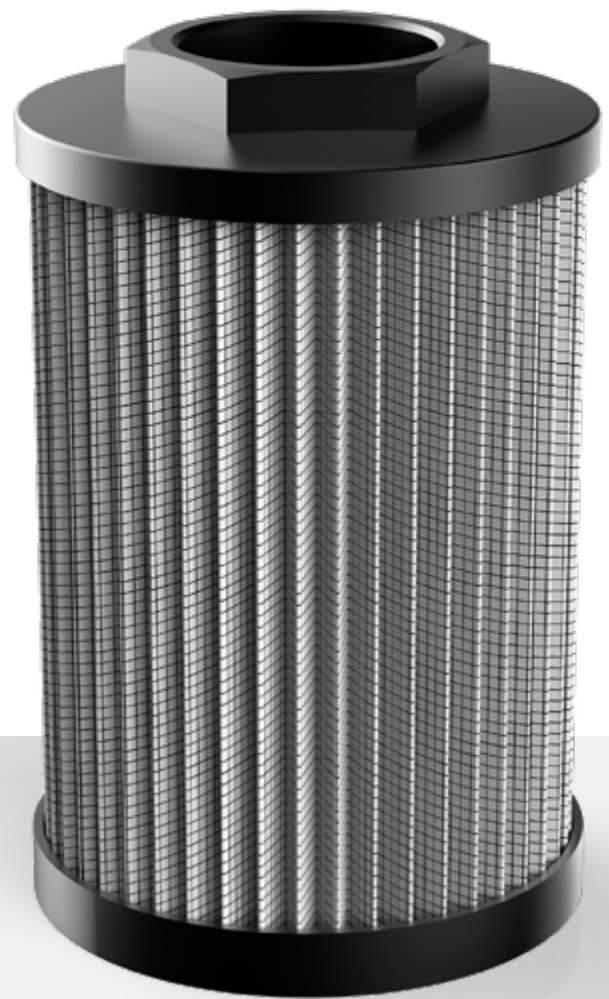
Setting: 30 kPa (0,3 bar) \pm 10%

WORKING TEMPERATURE

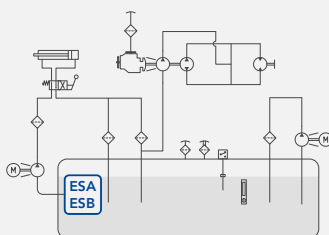
From -25° to +110° C

COMPATIBILITY (ISO 2943)

Full with fluids: HH-HL-HM-HR-HV-HTG
(according to ISO 6743/4)
For fluids different than the above mentioned,
please contact our Customer Service.



HYDRAULIC DIAGRAM



Is this datasheet the latest release? Please check on our website.



ORDERING AND OPTION CHART

E	S	A	FILTER ELEMENT FAMILY													
			SIZE & LENGHT	11	21	2A	22	30	31	32	40	41	42	43	51	52
			PORT TYPE													
			B = BSP thread	B	B	B	B	B	B	B	B	B	B	B	B	B
			N = NPT thread	N	N	N	N	N	N	N	N	N	N	N	-	-
			PORT SIZE													
			03 = 3/8"	03	-	-	-	-	-	-	-	-	-	-	-	-
			04 = 1/2"	04	04	04	-	-	-	-	-	-	-	-	-	-
			06 = 3/4"	-	06	06	-	-	-	-	-	-	-	-	-	-
			08 = 1"	-	-	-	08	-	-	-	-	-	-	-	-	-
			10 = 1" 1/4	-	-	-	-	10	10	10	-	-	-	-	-	-
			12 = 1" 1/2	-	-	-	-	12	12	12	12	12	-	-	-	-
			16 = 2"	-	-	-	-	-	-	16	16	16	16	-	-	-
			20 = 2" 1/2	-	-	-	-	-	-	-	-	-	20	-	-	-
			24 = 3"	-	-	-	-	-	-	-	-	-	24	24	-	-
			28 = 3" 1/2	-	-	-	-	-	-	-	-	-	-	-	28	-
			32 = 4"	-	-	-	-	-	-	-	-	-	-	-	-	32
			BYPASS VALVE													
			W = without	W	W	W	W	W	W	W	W	W	W	W	W	W
			A = 30 kPa (0,3 bar)	D	D	D	D	D	D	D	D	D	D	D	D	D
			FILTER MEDIA													
			ME = metal wire mesh 60 µm	ME	ME	ME	ME	ME	ME	ME	ME	ME	ME	ME	ME	ME
			MF = metal wire mesh 90 µm	MF	MF	MF	MF	MF	MF	MF	MF	MF	MF	MF	MF	MF
			MG = metal wire mesh 250 µm	MG	MG	MG	MG	MG	MG	MG	MG	MG	MG	MG	MG	MG

MAINTENANCE

The best time to change your filter element is just before it reaches its maximum dirt-holding capacity. When it is time to change the filter element, switch off the system before opening the tank. Remove the dirty filter element and replace it with an original UFI element, verifying the part number on the filter cap or on the catalogue.

Close the tank.
We recommend the stocking of a spare UFI filter element for timely replacement when required.



ESB

SUCTION FILTERS



ORDERING AND OPTION CHART

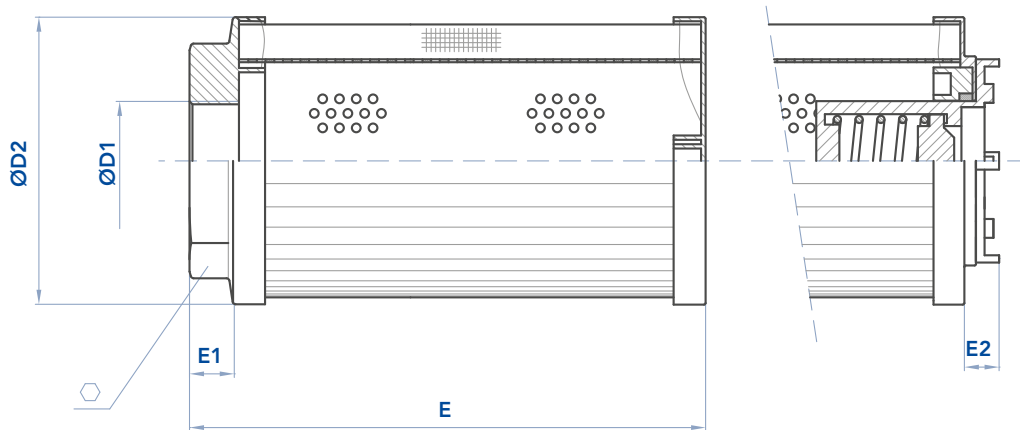
E	S	B	FILTER ELEMENT FAMILY													
			SIZE & LENGHT	11	21	2A	22	30	31	32	40	41	42	43	51	52
			PORT TYPE													
			B = BSP thread	B	B	B	B	B	B	B	B	B	B	B	B	B
			N = NPT thread	N	N	N	N	N	N	N	N	N	N	N	-	-
			PORT SIZE													
			03 = 3/8"	03	-	-	-	-	-	-	-	-	-	-	-	-
			04 = 1/2"	04	04	04	-	-	-	-	-	-	-	-	-	-
			06 = 3/4"	-	06	06	-	-	-	-	-	-	-	-	-	-
			08 = 1"	-	-	-	08	-	-	-	-	-	-	-	-	-
			10 = 1" 1/4	-	-	-	-	10	10	10	-	-	-	-	-	-
			12 = 1" 1/2	-	-	-	-	12	12	12	12	12	-	-	-	-
			16 = 2"	-	-	-	-	-	-	16	16	16	16	-	-	-
			20 = 2" 1/2	-	-	-	-	-	-	-	-	-	20	-	-	-
			24 = 3"	-	-	-	-	-	-	-	-	-	24	24	-	-
			28 = 3" 1/2	-	-	-	-	-	-	-	-	-	-	-	28	-
			32 = 4"	-	-	-	-	-	-	-	-	-	-	-	-	32
			BYPASS VALVE													
			X = not available	W	W	W	W	W	W	W	W	W	W	W	W	W
			FILTER MEDIA													
			ME = metal wire mesh 60 µm	ME	ME	ME	ME	ME	ME	ME	ME	ME	ME	ME	ME	ME
			MF = metal wire mesh 90 µm	MF	MF	MF	MF	MF	MF	MF	MF	MF	MF	MF	MF	MF
			MG = metal wire mesh 250 µm	MG	MG	MG	MG	MG	MG	MG	MG	MG	MG	MG	MG	MG

NOTE

The used filter elements cannot be cleaned and are classified as "Dangerous waste material". They must be disposed according to local laws by authorized Companies.

Verify that the Company you choose has the expertise and authorization to dispose this type of waste material.

INSTALLATION DRAWING

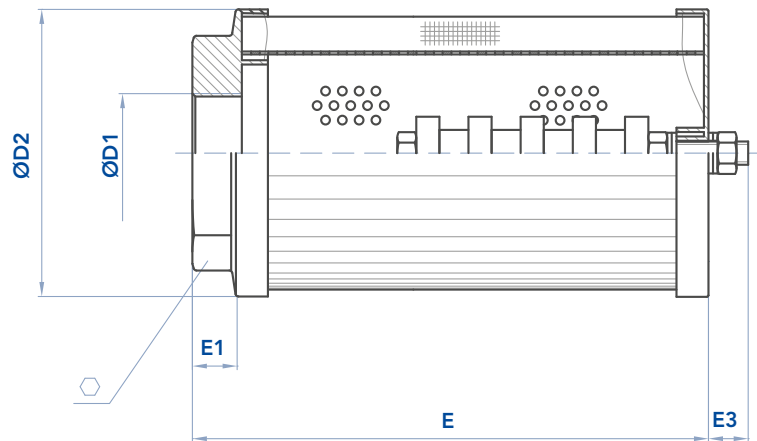


FILTER HOUSING

	D1	D2	E	E1	E2	⬡	kg
ESA11	3/8" - 1/2"	52	73	12	13	30	0,05
ESA21	1/2" - 3/4"	70	92	13	11	42	0,25
ESA2A	1/2" - 3/4"	70	141	13	11	42	0,25
ESA22	1"	70	137	13	11	42	0,25
ESA30	1"1/4 - 1"1/2	99	135	15	12	70	0,30
ESA31	1"1/4 - 1"1/2	99	178	15	12	70	0,40
ESA32	1"1/4 - 1"1/2 - 2"	99	218	15	12	70	0,50
ESA40	1"1/2 - 2"	130	160	15	15	70	0,50
ESA41	1"1/2 - 2"	130	201	15	15	70	0,70
ESA42	2" - 2"1/2 - 3"	130	253	15	25	101	1,00
ESA43	3"	130	330	15	25	101	1,30
ESA51	3"1/2	180	390	35	-	140	2,80
ESA52	4"	180	440	35	-	140	3,00



INSTALLATION DRAWING



FILTER HOUSING

	D1	D2	E	E1	E3	⬡	kg
ESB11	3/8" - 1/2"	52	73	12	9	30	0,10
ESB21	1/2" - 3/4"	70	92	13	12	42	0,30
ESB2A	1/2" - 3/4"	70	141	13	12	42	0,30
ESB22	1"	70	137	13	13	42	0,30
ESB30	1"1/4 - 1"1/2	99	135	15	12	70	0,35
ESB31	1"1/4 - 1"1/2	99	178	15	12	70	0,45
ESB32	1"1/4 - 1"1/2 - 2"	99	218	15	14	70	0,60
ESB40	1"1/2 - 2"	130	160	15	14	70	0,60
ESB41	1"1/2 - 2"	130	201	15	14	70	0,80
ESB42	2" - 2"1/2 - 3"	130	253	15	14	101	1,20
ESB43	3"	130	330	15	14	101	1,50
ESB51	3"1/2	180	390	35	4	140	3,00
ESB52	4"	180	440	35	4	140	3,20

ESA-ESB

SUCTION FILTERS



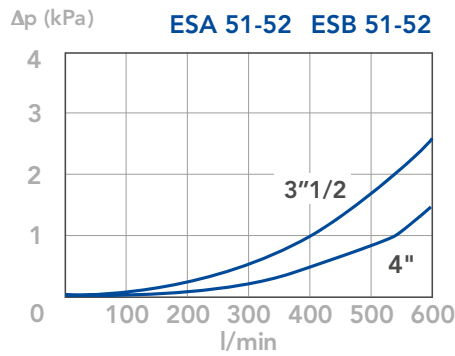
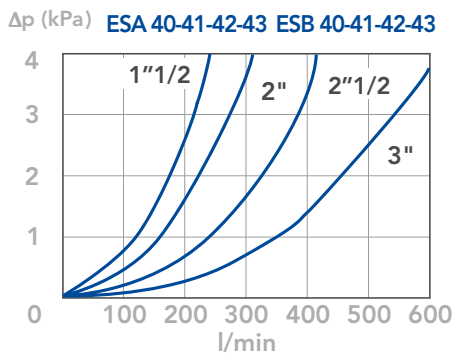
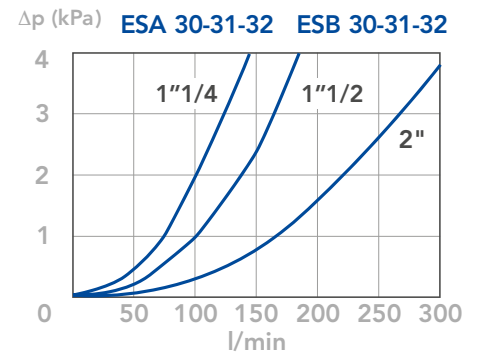
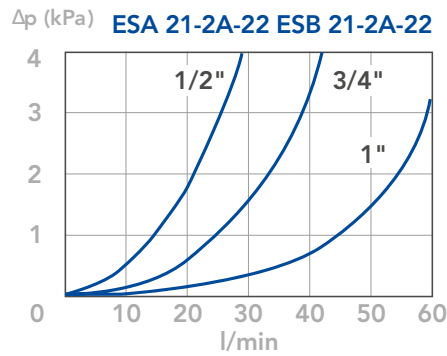
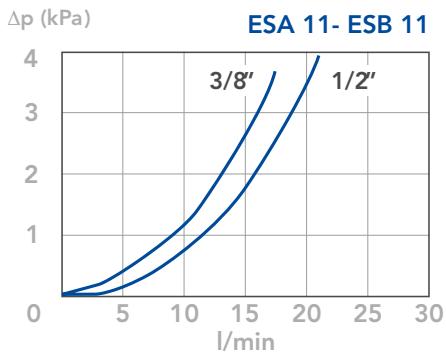
MAINTENANCE

The best time to change your filter element is just before it reaches its maximum dirt-holding capacity. When it is time to change the filter element, switch off the system before opening the tank. Remove the dirty filter element and replace it with an original UFI

element, verifying the part number on the filter cap or on the catalogue. Close the tank. We recommend the stocking of a spare UFI filter element for timely replacement when required.

PRESSURE DROP CURVES (ΔP)

The Pressure Drop (Δp) must be lower than 3 kPa (0,03 bar).



N.B.

All the curves have been obtained with mineral oil having a kinematic viscosity 30 cSt and specific gravity 0,86 kg/dm³; for fluids with different features, please consider the factors described in the first part of this catalogue. All the curves

are obtained from test done at the UFI HYDRAULIC DIVISION Laboratory, according to the specification ISO 3968. In case of discrepancy, please check the contamination level, viscosity and features of the fluid in use.