

# UOW-GTC

## OFF-LINE FILTERS



### PORTABLE FILTRATION PACKAGE

Inlet: flexible hose, 2 m long with rigid end 0,5 m long  
Outlet: flexible hose, 2 m long with rigid end 0,5 m long  
“Y” type filter for pump protection  
Gear pump 40 l/min with inbuilt 1 MPa (10 bar) relief valve  
Electric motor: three phase 380V - 0,75 kW 1450 rpm - IP54  
Double handle for proper and easy transportation

### MODEL UOW040T0075A3

Oil transfer and filtration package of clean and compact construction, joining high filtration performances and long life filter element to an easy and handy use.

The filter can be fitted with a visual or electrical clogging indicator, also of differential type.

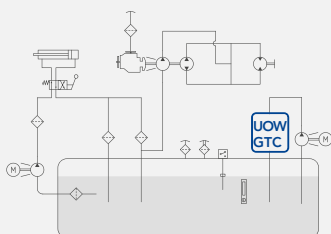
The filter element, having a wide filtration area (12.800 cm<sup>2</sup>) and excellent efficiency features, is normally available with filtration degree 5, 7, 12 and 21µm(c) ( $\beta_x > 1.000$ ) and WR (Hydro Dry).

Total weight 50 kg.

**Filter element, to be ordered apart.**  
(please refer to the FOF series datasheet for the technical features).



### HYDRAULIC DIAGRAM



Is this datasheet the latest release? Please check on our website.



# UOW

## OFF-LINE FILTERS

### ORDERING AND OPTION CHART

U	O	W	WHEELED FILTRATION UNIT
0	4	0	NOMINAL FLOW RATE
			040 = 40 l/min
			ELECTRICAL MOTOR TYPE
			T = three phases 380V, standard
			M = single phase 220V, optional
0	0	7 5	NOMINAL POWER
			0075 = 0,75 kW
A	3		VERSION
			A3 = standard version
X	X		ACCESSORIES
			XX = without accessories
E	R	F	FILTER ELEMENT FAMILY
3	4		SIZE & LENGTH
		N	SEALS
			N = NBR Nitrile
			FILTER MEDIA
			FA = fibreglass 5 $\mu\text{m(c)}$ $\beta > 1.000$
			FB = fibreglass 7 $\mu\text{m(c)}$ $\beta > 1.000$
			FC = fibreglass 12 $\mu\text{m(c)}$ $\beta > 1.000$
			FD = fibreglass 21 $\mu\text{m(c)}$ $\beta > 1.000$
			CC = impregnated cellulose 10 $\mu\text{m}$ $\beta > 2$
			WR = water removal*



# GTC

## OFF-LINE FILTERS



### ORDERING AND OPTION CHART

<b>G</b>	<b>T</b>	<b>C</b>	<b>WHEELED FILTRATION UNIT</b>
0	4	0	<b>NOMINAL FLOW RATE</b>
			040 = 40 l/min
			<b>ELECTRICAL MOTOR TYPE</b>
			T = three phases 380V, standard
			M = single phase 220V, optional
0	0	7 5	<b>NOMINAL POWER</b>
			0075 = 0,75 kW
<b>A</b>	<b>3</b>		<b>VERSION</b>
			A3 = standard version
<b>X</b>	<b>X</b>		<b>ACCESSORIES</b>
			XX = without accessories

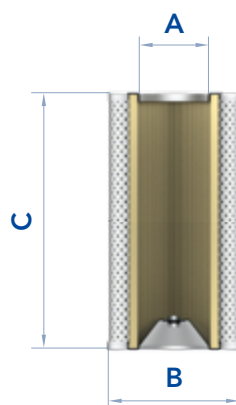
<b>C</b>	<b>R</b>	<b>C</b>	<b>FILTER ELEMENT FAMILY</b>
3	4	0	<b>SIZE &amp; LENGTH</b>
			<b>FILTER MEDIA</b>
			FT = fibreglass 5 µm(c) β>1.000
			FC = fibreglass 7 µm(c) β>1.000
			FD = fibreglass 12 µm(c) β>1.000
			FV = fibreglass 21 µm(c) β>1.000
			CD = impregnated cellulose 10 µm β>2
			WR = water removal*
			<b>SEALS</b>
			N = NBR Nitrile

### NOTES

\*Water removal media, see "Hydro dry" chapter.

# UOW-GTC

## OFF-LINE FILTERS



### FILTER ELEMENT

	A	B	C	Kg	AREA (cm <sup>2</sup> )	
					Media F+	Media C+
ERF34 CRC340	92	126	480	2,20	12.800	15.400

### N.B.

The UOW mobile off-line filtration unit filters hydraulic fluid at low-pressure with the aid of a self-contained pump, motor and filter. Oil returning to the tank-reservoir from the return line is filtered by the UOW unit,

which drastically reduces "clean-up time." The mobile filtration unit includes a detailed use and maintenance instruction manual.